

LM3402HV Design Document

National Semiconductor
LM3402HV
October 2006



1.0 Design Specifications

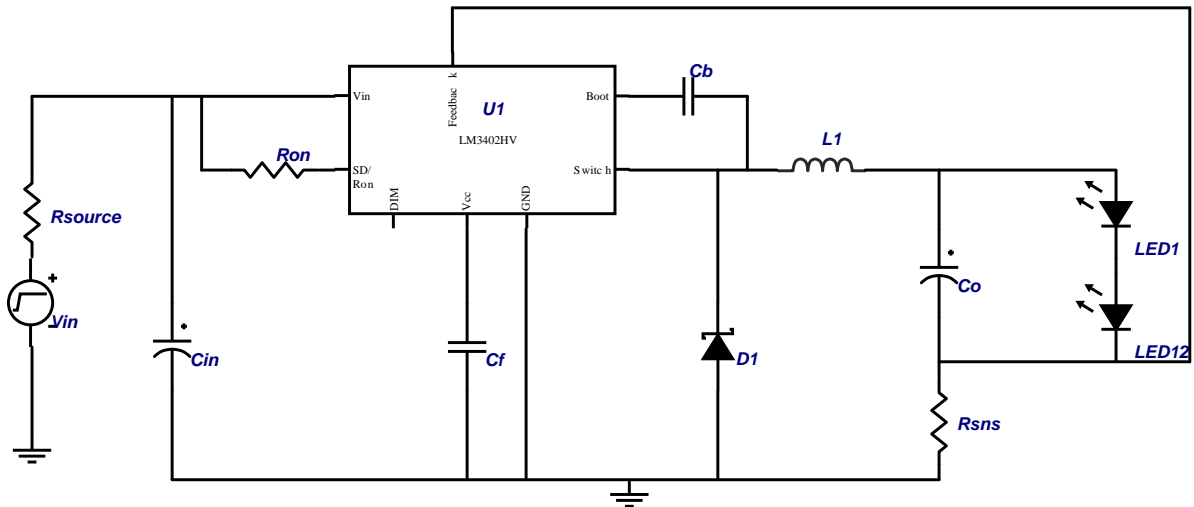
Inputs	Outputs #1
VinMin=8	Vout1=5.2
VinMax=75	Iout1=0.350

2.0 Design Description

This circuit has been designed to drive a string of two AlInGaP red or amber LEDs (total $V_o = 5.2V$) at a forward current of 350 mA $\pm 10\%$ mA with a peak-to-peak ripple current of 50 mA or less. The input is 8V to 75V, with LED current and switching frequency (500 kHz) centered at $V_{IN} = 48V$.

This design uses a small output capacitor to maintain low ripple current through the LED while allowing higher ripple current in the switch/inductor.

3.0 Schematic



241689_7419_0

FIGURE 1. Example Schematic Showing Connection for all Components.

4.0 Bill Of Materials

Part	Manufacturer	Part#	Attributes
Cb	Vishay	VJ0805Y103KXXAT	10n F
Cf	Vishay	VJ0805Y104KXXAT	100n F
Cin	TDK	C5750X7R2A335M	NumCaps=1, 3.3u F
Co	Vishay	VJ1206Y224KXXAT	220n F
D1	Central Semiconductor	CMSH1-100M	0.5 V
L1	TDK	SLF7045T-101MR60-1PF	100u H, 0.39 Ohms
Ron	Vishay	CRCW08057872F	78.7k Ohms
Rsns	Panasonic	ERJ6BQFR62V	0.62 Ohms
U1	National Semiconductor	LM3402HV	

Notes

National does not assume any responsibility for use of any circuitry described, no circuit patent licenses are implied and National reserves the right at any time without notice to change said circuitry and specifications.

For the most current product information visit us at www.national.com.

LIFE SUPPORT POLICY

NATIONAL'S PRODUCTS ARE NOT AUTHORIZED FOR USE AS CRITICAL COMPONENTS IN LIFE SUPPORT DEVICES OR SYSTEMS WITHOUT THE EXPRESS WRITTEN APPROVAL OF THE PRESIDENT AND GENERAL COUNSEL OF NATIONAL SEMICONDUCTOR CORPORATION. As used herein:

- | | |
|--|---|
| <p>1. Life support devices or systems are devices or systems which, (a) are intended for surgical implant into the body, or (b) support or sustain life, and whose failure to perform when properly used in accordance with instructions for use provided in the labeling, can be reasonably expected to result in a significant injury to the user.</p> | <p>2. A critical component is any component of a life support device or system whose failure to perform can be reasonably expected to cause the failure of the life support device or system, or to affect its safety or effectiveness.</p> |
|--|---|

BANNED SUBSTANCE COMPLIANCE

National Semiconductor certifies that the products and packing materials meet the provisions of the Customer Products Stewardship Specification (CSP-9-111C2) and the Banned Substances and Materials of Interest Specification (CSP-9-111S2) and contain no "Banned Substances" as defined in CSP-9-111S2.

Leadfree products are RoHS compliant.



**National Semiconductor
Americas Customer
Support Center**
Email:
new.feedback@nsc.com
Tel: 1-800-272-9959

**National Semiconductor Europe
Customer Support Center**
Fax: +49 (0) 180-530-85-86
Email: europe.support@nsc.com
Deutsch Tel: +49 (0) 69 9508 6208
English Tel: +49 (0) 870 24 0 2171
Français Tel: +33 (0) 1 41 91 8790

**National Semiconductor Asia
Pacific Customer Support Center**
Email: ap.support@nsc.com

**National Semiconductor Japan
Customer Support Center**
Fax: 81-3-5639-7507
Email: jpn.feedback@nsc.com
Tel: 81-3-5639-7560